

COMPREHENSIVE SOLUTIONS FOR THE FOOD INDUSTRY



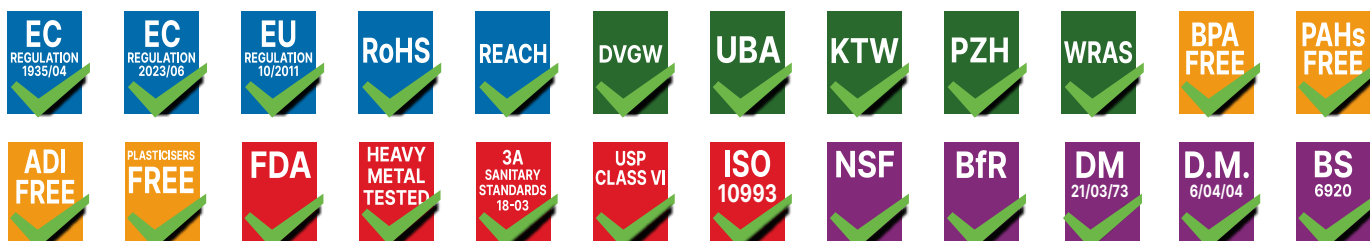
01 | Food industry

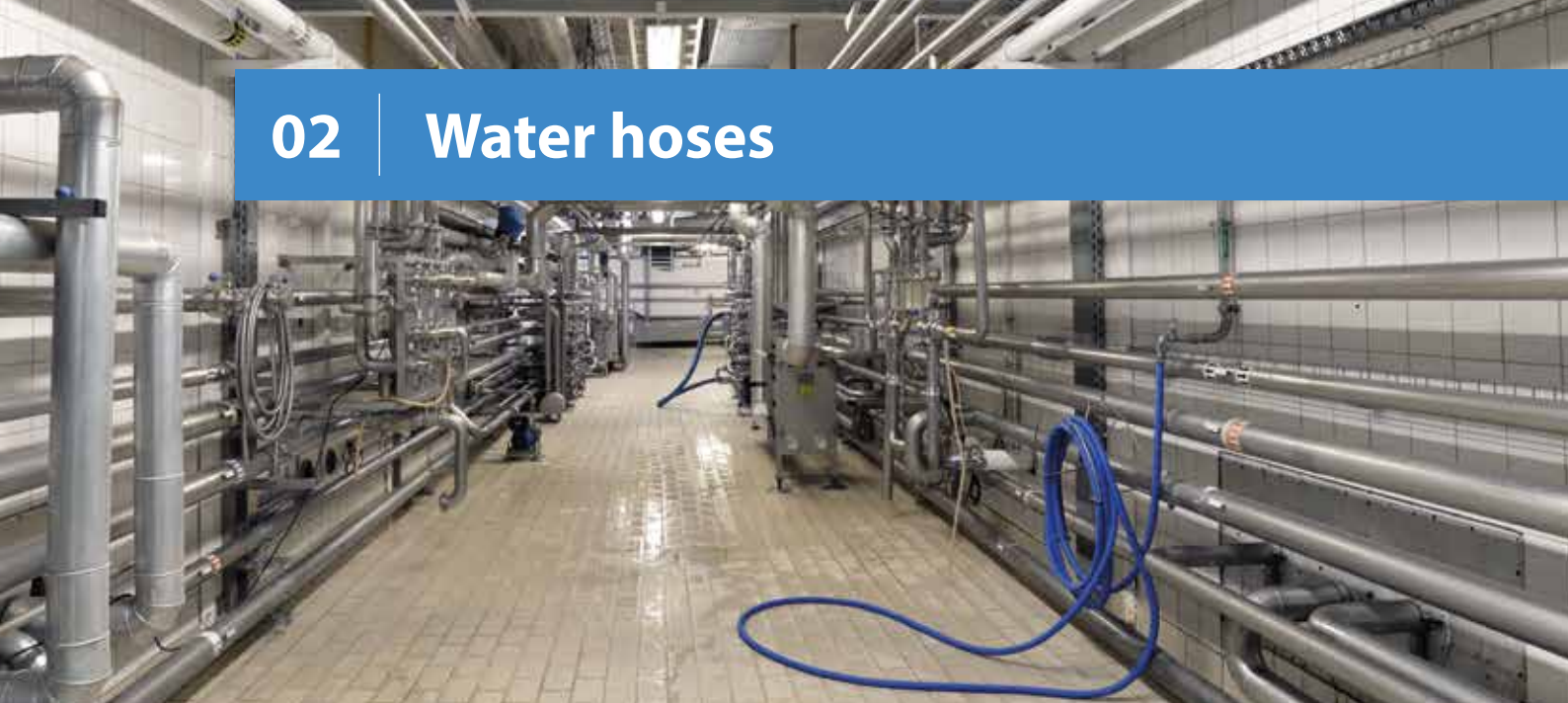


In the food industry, every detail matters – from the quality of raw materials, through production processes, to the final packaging. One of the fundamental elements ensuring production safety and hygiene is the selection of appropriate installation components – in particular hoses, connectors, and accessories that come into contact with food.

At Tubes International, we understand perfectly well how high the requirements of this industry are. That is why we offer products that meet strict international standards, including regulations on materials intended to come into contact with food, such as 1935/2004/EC, 10/2011/EU, 2023/2006/EC (GMP), and FDA. Our solutions are designed to ensure maximum cleanliness of technological processes, resistance to the most demanding food substances, and ease of hygiene maintenance.

We provide comprehensive and reliable solutions that not only increase the efficiency and durability of installations, but above all guarantee hygiene and safety as well as full compliance with applicable legal regulations. Thanks to the many years of experience and specialist knowledge of our technical advisors, we help customers choose the optimal solutions tailored to the specifics of each application.





Transparent PVC STAR MS 2 hose



Lightweight, highly flexible PVC STAR MS 2 plastic hose with DIN 11851 connector mounted with a heavy duty clamp, designed for the transfer of industrial water, juices, beverages, alcohols with a concentration of up to 50%, and other food products. Suitable for milk and dairy products. Reinforced with a steel wire spiral embedded in the PVC wall, it provides good resistance to vacuum and hose kinking. The transparent wall allows for easy visual inspection of the flow.

Material	transparent PVC
Reinforcement	galvanized steel helix
Working temp.	from -15°C to +90°C

ACQUA ADT-K hose for drinking water

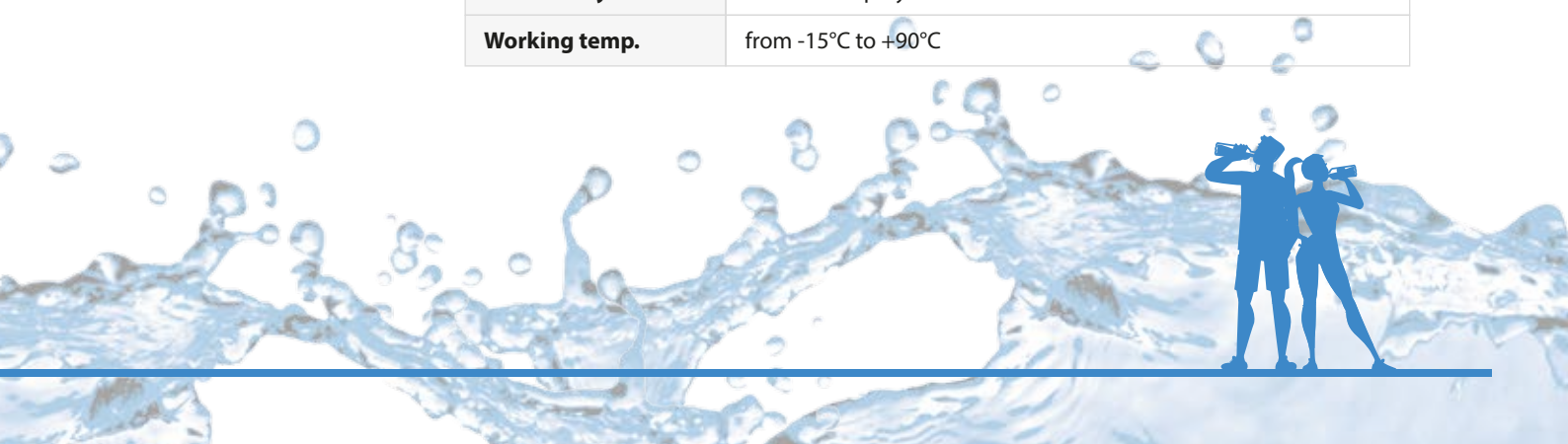


Flexible pressure hose designed for the transfer of cold (+23°C) and hot (+60°C) drinking water ACQUA ADT-K with stainless steel end fitting with BSP internal thread mounted with a helix clamp. Its transparent, mirror-like inner surface prevents biofilm formation on the walls and is easy to keep clean.

Drinking water and its transmission and distribution systems (including hoses used for this purpose) are subject to general European regulations (Directive 98/83/EC) and specific national regulations (PZH).



Internal layer	smooth with a mirror-like surface technopolymer
Reinforcement	synthetic braid
External layer	blue technopolymer
Working temp.	from -15°C to +90°C



03 | Milk hoses



Multipurpose FOOD STAR hose for transporting foodstuffs and

FOOD STAR rubber hose with SMS hygienic connector, mounted with a crimping ferrule, designed for transporting food substances that require the use of odorless and tasteless rubber. Does not contain phthalates or bisphenol A. The inner layer of NBR/PVC is resistant to cleaning agents and processes commonly used in the food industry. Suitable for milk and dairy products as well as fatty foodstuffs.



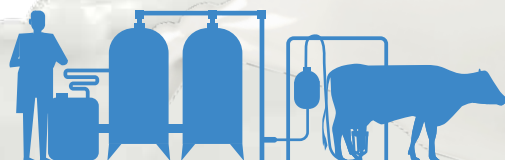
Internal layer	white NBR/PVC rubber
Reinforcement	synthetic braid, steel spiral
External layer	blue synthetic rubber
Working temp.	from -15°C to +90°C

Flexible MASTERMILK SD hose for milk transfer

Flexible and easy to use MASTERMILK SD rubber hose with DIN 11851 hygienic connector, mounted with a crimping ferrule. Outer layer resistant to temporary contact with animal and vegetable fats. Widely used in the dairy industry under normal conditions of use. Not recommended for reloading applications, in harsh working conditions and under pulsating pressure. Mandatory equipment for every dairy.



Internal layer	white NBR rubber
Reinforcement	synthetic cord, steel spiral
External layer	blue synthetic rubber
Working temp.	from -15°C to +90°C



04 | Hoses for oily substances



Robust IMPERIA SPL 10 hose



IMPERIA SPL 10 rubber hose with SMS connector, mounted with a safety clamp, designed for fatty food substances such as cream, butter, ice cream, chocolate, meat masses, which require the use of odorless and tasteless rubber. Particularly recommended for reloading and heavy-duty applications. The outer layer is resistant to temporary contact with animal and vegetable fats, abrasion, and weather conditions.

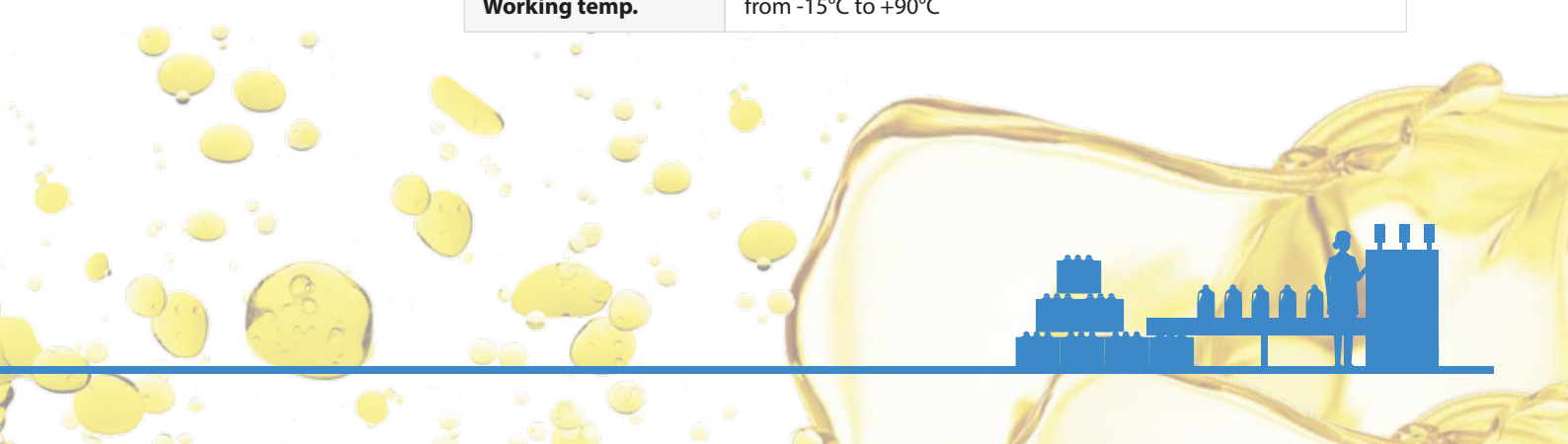
Internal layer	white NBR rubber
Reinforcement	synthetic cord, steel spiral
External layer	blue CR rubber
Working temp.	from -15°C to +90°C

ACAPULCO hose for transporting fats



Strong ACAPULCO rubber hose with Tankwagen coupling, mounted with a safety clamp, specially designed for transporting oils and fats. Does not contain phthalates or bisphenol A. The outer layer is resistant to grease and aging. Ideal as a hose for transferring medium from tankers in oil plants.

Internal layer	white NBR/PVC rubber
Reinforcement	two layers of synthetic cord, steel spiral
External layer	blue, smooth CR rubber
Working temp.	from -15°C to +90°C





Flexible VINO FLEX EASY hose for beer



Corrugated VINO FLEX EASY rubber hose with DIN 11851 connector, mounted with a dedicated EASY SHELL clamp. Designed for transporting beer, wine, and fruit juices. Thanks to its external corrugation, the hose is extremely flexible and elastic. The outer surface of the hose is made of thermoplastic material with slippery fabric properties and has a very low friction coefficient, which further facilitates hose operation by eliminating friction with other hoses and equipment. Mandatory equipment for every small or large brewery.

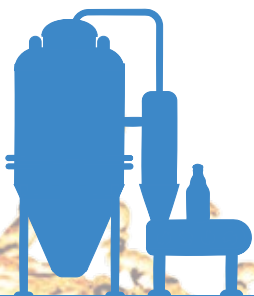
Internal layer	white, smooth butyl rubber (IIR)
Reinforcement	synthetic cord, steel spiral
External layer	red synthetic rubber with thermoplastic coating
Working temp.	from -40°C to +120°C

Hose type SCOTLAND LL BE® for transporting strong alcohols,



High-quality SCOTLAND LL BE® rubber hose with DIN 11851 connector, mounted with a crimping ferrule. Widely used in the spirits industry for the transfer of strong alcohols with a concentration of up to 96%. It has copper wires ensuring electrical continuity between the hose ends, which increases the safety of transferring high-proof, flammable alcohol (when installing, ensure that the wire is in contact with the end). The outer layer is resistant to abrasion, aging, and weather conditions.

Internal layer	white butyl rubber (IIR)
Reinforcement	synthetic cord, steel spiral
External layer	red butyl rubber (IIR)
Working temp.	from -40°C to +120°C



CRUSHPROOF STAR hose for milk transfer



Lightweight CRUSHPROOF STAR rubber hose with SMS coupling mounted with a safety clamp. The special design of the "CRUSHPROOF" hose with a plastic spiral allows the hose to return to its original shape under pressure after being accidentally run over, e.g., by a forklift/tanker. The hose is lightweight and easy to operate. The hose is primarily designed for unloading milk from tankers. Not recommended for heavy-duty use in process applications.

Internal layer	white NR/NBR blend
Reinforcement	synthetic cord, PET spiral
External layer	blue synthetic rubber
Working temp.	from -30°C to +85°C

SUPERTOP LL FOOD UPE® hose for transporting liquid chemicals



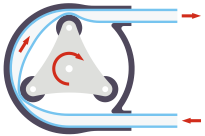
SUPERTOP LL FOOD UPE® plastic hose with ERS Camlock adapter, mounted with a safety clamp. Designed for the transfer of liquid chemicals, including aggressive acids, alkalis, and other detergents used for cleaning installations in food processing plants (e.g., CIP). The inner layer of UPE complies with food contact requirements. It has a copper wire ensuring electrical continuity between the hose ends.

Internal layer	white polyethylene UPE
Reinforcement	synthetic cord, steel spiral
External layer	blue, smooth EPDM rubber
Working temp.	from -30°C to +100°C





Highly flexible TYGON® A-60-C plastic hose



The TYGON® A-60-C plastic hose is extremely flexible, elastic, with high fatigue resistance to deformation and abrasion resistance. Perfect for use in peristaltic pumps. Used for dispensing and portioning cold and hot food products. The soft hose material (61 Shore-A) is very flexible and provides excellent service life of up to 1000 hours in a peristaltic pump.

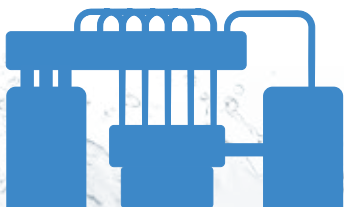
Material	TPE (Norprene®)
Working temp.	up to +135°C
Brittle temp.	-40°C
Hardness	61 Shore (A)

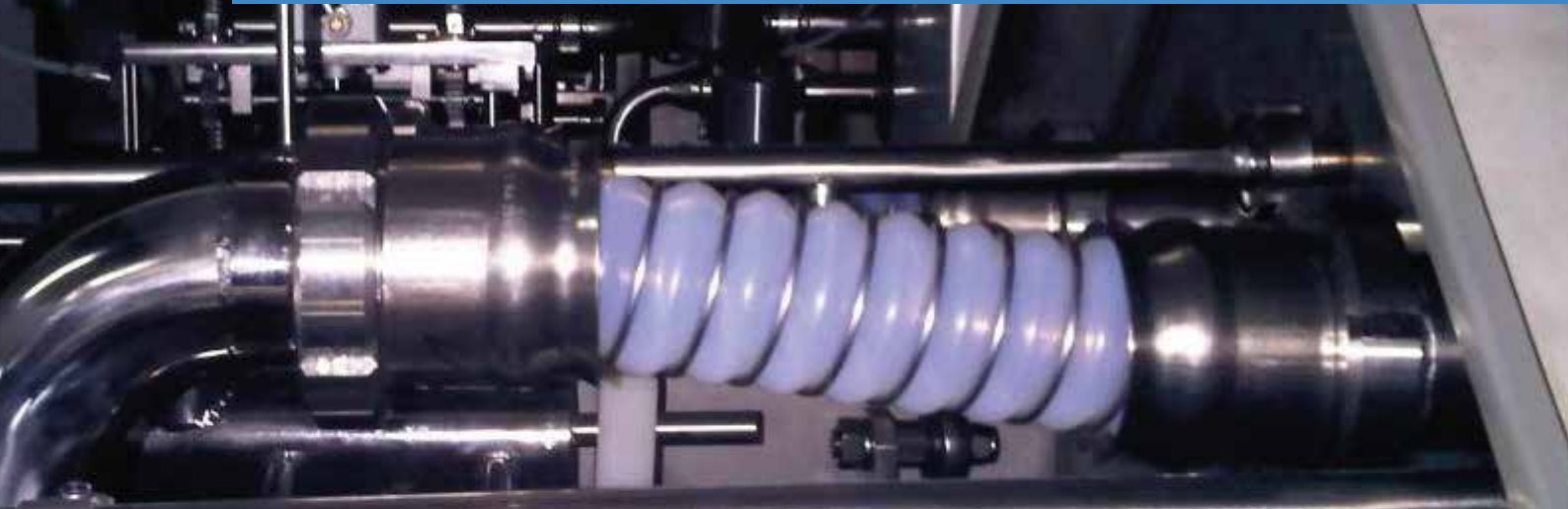
CLEARWAY SD PLATINUM semi-transparent silicone hose



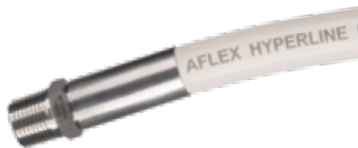
High-quality CLEARWAY SD PLATINUM silicone hose with Triclover connector, mounted with a clamp sleeve. It features a smooth, non-stick, non-porous inner surface that prevents product particles from sticking and bacteria from growing, and makes the hose easy to clean. The outer layer is smooth, minimally corrugated in the spiral version, and easy to clean with a mild detergent.

Internal layer	translucent silicone
Reinforcement	layers of synthetic fabric, AISI 302 stainless steel spiral
External layer	translucent silicone
Working temp.	from -60°C to +200°C





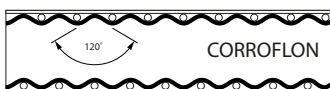
HYPERLINE FX WHITE flexible Teflon hose



HYPERLINE FX WHITE Teflon hose with a threaded end fitted with a crimping ferrule. Hose with a specific, patented design, made of PTFE with an externally spiral corrugated and smooth bore. This combines the advantages of the simple, smooth inner surface of smooth-walled hoses (unobstructed flow, easy cleaning, simple fitting of end pieces) with the high flexibility and pliability characteristic of corrugated hoses. It has an additional outer layer made of white silicone. This solution ensures a high degree of external hygiene, facilitating hose cleaning.

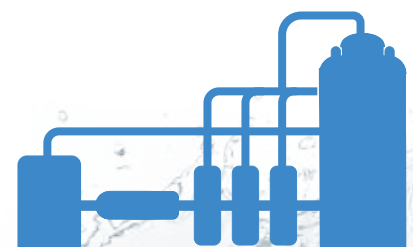
Material	smooth inside, externally spirally corrugated PTFE
Reinforcement	AISI 304 stainless steel braid (SS version)
Working temp.	from -70°C to +204°C (SS version)

CORROFLON hygienic Teflon hose



CORROFLON Teflon hose with stainless steel braiding, additionally covered with a layer of EPDM rubber. SMS connector mounted with a crimping ferrule. The inner layer of the hose has very gentle, wide, and shallow folds, which translates into excellent self-cleaning properties and easy drainage of substances from the hose. This design makes it an ideal product for use in food and pharmaceutical plants.

Material	spirally corrugated PTFE
Reinforcement	AISI 304 steel spiral, polypropylene braid, kynar braid
External layer	option - EPDM rubber, silicone (RC, RC SI versions)
Working temp.	from -73°C to +120°C





Very lightweight P2 PU FOOD hose



A very light, flexible ducting hose designed for removing air, vapors, dust, very fine fibers, powders, grains, and light loose materials. Very flexible and highly compressible axially, flexible even at low temperatures. Characterized by good resistance to abrasion, microbes, and hydrolysis. Non-toxic, does not contain halogens or plasticizers.

Material	polyether – transparent polyurethane, 0.4 mm thick
Reinforcement	steel wire helix
Working temp.	from -40°C to +100°C (temporarily up to +125°C)

Antistatic hose type P7 L PU PAS FOOD



Lightweight, flexible, medium thick suction hose designed for ducting and transfer of powders, grains, light granules, and other loose materials. Flexible, fairly compressible, almost smooth inside, flexible even at low temperatures. Characterized by good resistance to abrasion, microbes, and hydrolysis. Used, among others, for powdered milk, grains, rice, coffee, tea, and flour.

Material	polyether – transparent polyurethane, 0.7 mm thick
Reinforcement	stainless steel 1.4310 (AISI 301) wire helix
Working temp.	from -40°C to +100°C (temporarily up to +125°C)





Clamps

Material:

- galvanized steel
- AISI 430 stainless steel (bridge strip), galvanized steel (screw and rollers)
- AISI 304 stainless steel (belt and bridge), AISI 302 stainless steel (screw and rollers)
- AISI 316 stainless steel



Band-It® banding assembly system

Material:

- galvanized steel
- AISI 430 stainless steel (bridge strip), galvanized steel (screw and rollers)
- AISI 304 stainless steel (band and bridge), AISI 302 stainless steel (screw and rollers)
- AISI 316 stainless steel



Safety clamps

Material:

- AISI 304 stainless steel
- AISI 316 stainless steel



EASY SHELL clamps

Material:

- red polyamide



Ferrules

Material:

- AISI 304 stainless steel
- AISI 316 stainless steel



Vulcanization of couplings





Tubes International hoses

Tubes International offers comprehensive solutions for the food industry, manufacturing complete flexible hoses according to individual customer specifications. The hose assembly contain certified hose for contact with food and appropriately selected connectors and accessories.

The hoses supplied are used, among other things, for transporting drinking water, milk, juices, alcohols, fats, and oils. Depending on your needs, we use hoses made of rubber, PVC, polyethylene, PTFE, silicone, as well as transfer and ducting for bulk products.

At the customer's request, we manufacture ready-to-install hoses with a guarantee of hygiene, safety, and compliance with applicable food industry standards.

Examples of hose solutions offered by Tubes International

ALIFLEX hose assembly with threaded ends



SCOTLAND BE hose assembly with SMS couplings



BIOFLEX ULTRA Teflon hose assembly



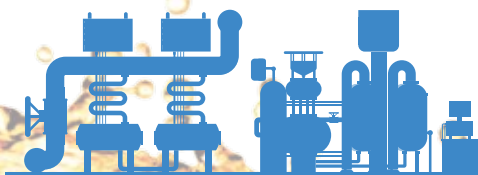
SPIRABEL hose assembly with DIN 11851 couplings



SCOTLAND NR hose assembly with couplings



PHARMAFLON hose assembly with DIN 11851 couplings





Couplings according to DIN 11851

Material: AISI 316 stainless steel (female and male ends), AISI 304 stainless steel (nuts, blind caps)
 Type: butt weld ends, with smooth and corrugated hose connection
 Seals: EPDM, NBR, silicone, Viton



Couplings according to SMS standard

Material: AISI 316 stainless steel (female and male ends), AISI 304 stainless steel (nuts, blind caps)
 Type: butt weld ends, with smooth and corrugated hose connections
 Seals: EPDM, NBR, PTFE, Viton



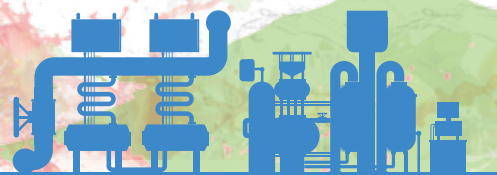
Triclover/Tri-Clamp hygienic couplings

Material: AISI 316 stainless steel (plates, caps), AISI 304 stainless steel (clamps)
 Type: butt weld, with smooth and corrugated hose connections
 Seals: EPDM, NBR, PTFE, silicone, Viton



Seals

Standard seals for use in the food and pharmaceutical industries. Made of materials such as EPDM, NBR, Viton, silicone, or PTFE. Effective sealing ensures that the transported product remains uncontaminated and safe for consumption.



13 | Couplings for the food industry



Threaded connectors

Material: AISI 316 stainless steel

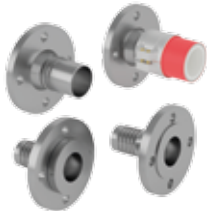
Type: nipples, couplings, elbows, tees, crosses, connectors, plugs, nuts



CAMLOCK couplings

Material: AISI 316 stainless steel, aluminum, polypropylene, brass

Type: threaded, with hose connection



FLANGE couplings

Material: AISI 316 stainless steel, AISI 304 acid-resistant steel

Type: butt weld, with hose connection



STORZ couplings

Material: AISI 316 stainless steel, aluminum, brass

Type: threaded, with hose connection



Hygienic valves

Material: AISI 316 stainless steel, aluminum, brass

Type: threaded, for welding



14 | Cleaning and washing



NiTO washing guns

Max. working pressure	from 6 bar to 25 bar
Working temp.	from +40°C to +80°C

NiTO SS quick release couplings for water



Material	AISI 316L steel
Max. working pressure	25 bar
Seals	Viton

CLEAN STAR PVC hose for washing with cold and warm water

PVC CLEAN STAR hose, flexible, six-layer hose designed for washing with cold and hot water and light chemicals. Highly resistant to kinking. Essential equipment for every plant.



Internal layer	smooth PVC
Reinforcement	double polyester braid
External layer	blue, smooth PVC
Working temp.	from -15°C to +70°C

ECODORA automatic hose reels (series 304, 354, 434)



Material	AISI 304 steel
Max. working pressure	150 bar (depending on hose diameter)
Working temp.	up to +130°C (without hose)





Heated hoses

Used in processes involving heating and maintaining a constant elevated temperature of food substances such as chocolate, fats, and oils. These hoses are also commonly used in vacuum packaging and labeling machines.



Steel hoses

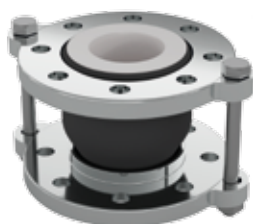
Hoses and ready-made, complete hose assemblies with couplings are available in two variants:

- Stripwound steel hoses (for extraction, non-pressurized and very low pressure, transport of bulk materials). They can be used at much higher temperatures than plastic ducting hoses for the extraction of various types of smoke, gases, dust, and exhaust fumes.
- Pressure metal hoses and pipes (for medium and high pressure, for high vacuum). The scope of application covers all areas of industry for various media, e.g., hot water, steam, oils, chemicals, liquid and volatile gases



Hoses for transporting bulk materials

Specially designed for transporting foodstuffs with a high friction coefficient, such as sugar, grains, powders, and granules.



Compensators

They are used in pipelines and pipe installations. They serve to absorb small movements (axial, lateral, and angular) and vibrations. They absorb the displacement of connected pipeline parts resulting from thermal expansion of the pipeline, reduce stress in the pipeline, and facilitate its installation. They eliminate vibrations and noise in industrial installations and equipment. However, they must be chemically resistant to the substances flowing through the pipeline, as well as to pressure and temperature.



Pneumatics

The industrial pneumatics section includes not only connectors and hoses, but also air preparation stations, control valves, actuators, and all accompanying accessories. In addition to the standard products in our range, Tubes International also offers custom solutions—please contact our representatives for detailed information.

Our offer also includes:

Power hydraulics components

- Hydraulic hoses and fittings
- Covers and protections for hoses
- Hydraulic manifolds
- Hydraulic pumps and pump connections
- Hydraulic valves
- Hydraulic quick release couplings
- Other elements of power hydraulics

Industrial hoses

- Water and air hoses
- Steam hoses
- Gas hoses
- Chemical hoses
- Hoses for fuels and oils
- Hoses for transporting abrasive materials
- Hoses for concrete and plastering

Remaining assortment

- Filling nozzles and fittings
- Air guns and accessories
- High-pressure cleaning equipment
- Low-pressure cleaning equipment
- High-temperature protection covers
- Pressure gauges
- Precision fittings

The complete Tubes International product range and contact details are available on our website.